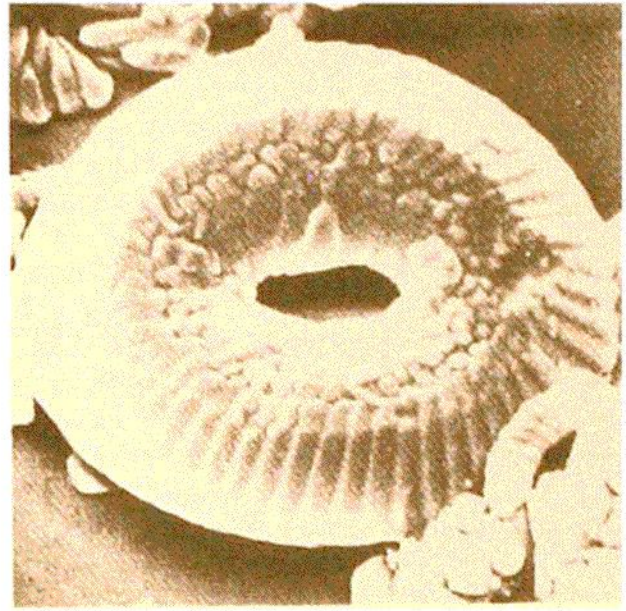


11



12

Fig. 29b. Two coccoliths (skeletal plates) from a microscopic, floating marine plant of Genus Coccolithus, shown at 4,270 diameters magnification. In number 11 a smaller coccolith, and some broken parts of others, can be seen at the lower left. All are from a sediment core taken from a depth of approximately 1,080 feet in the ocean floor at Site 317 in the central Pacific. S. O. Schlanger, E. D. Jackson, et. al., Initial Reports of the Deep Sea Drilling Project, v. 33, 1976, p. 405, Plate 4.